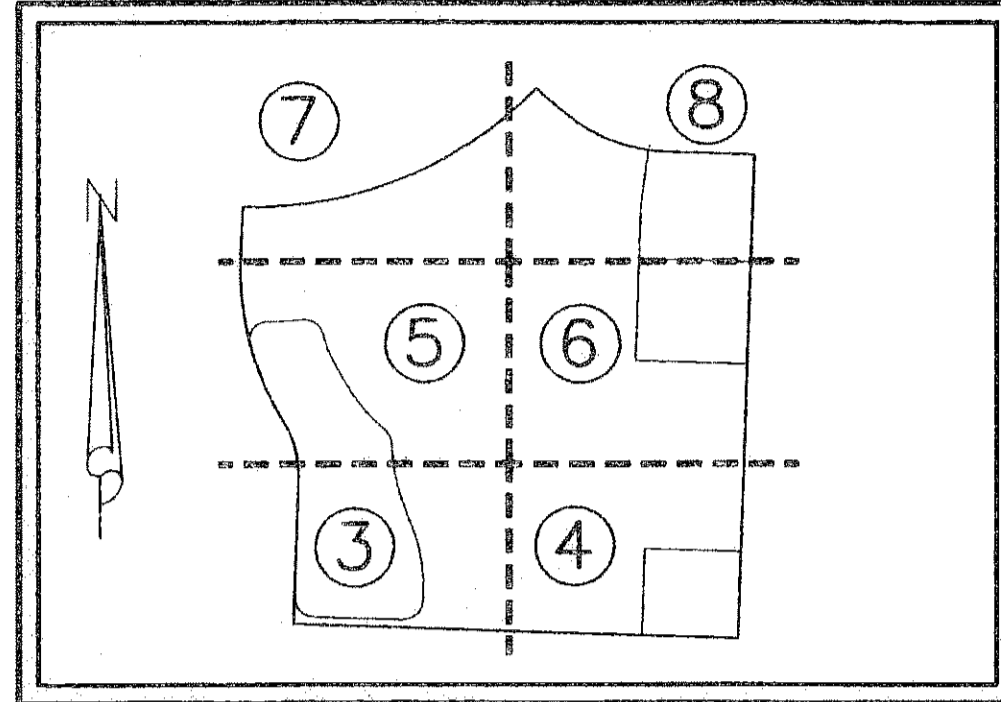
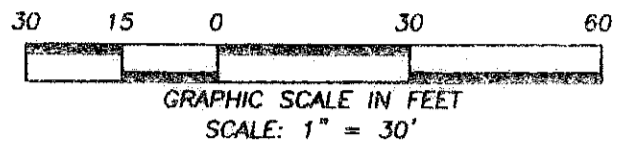
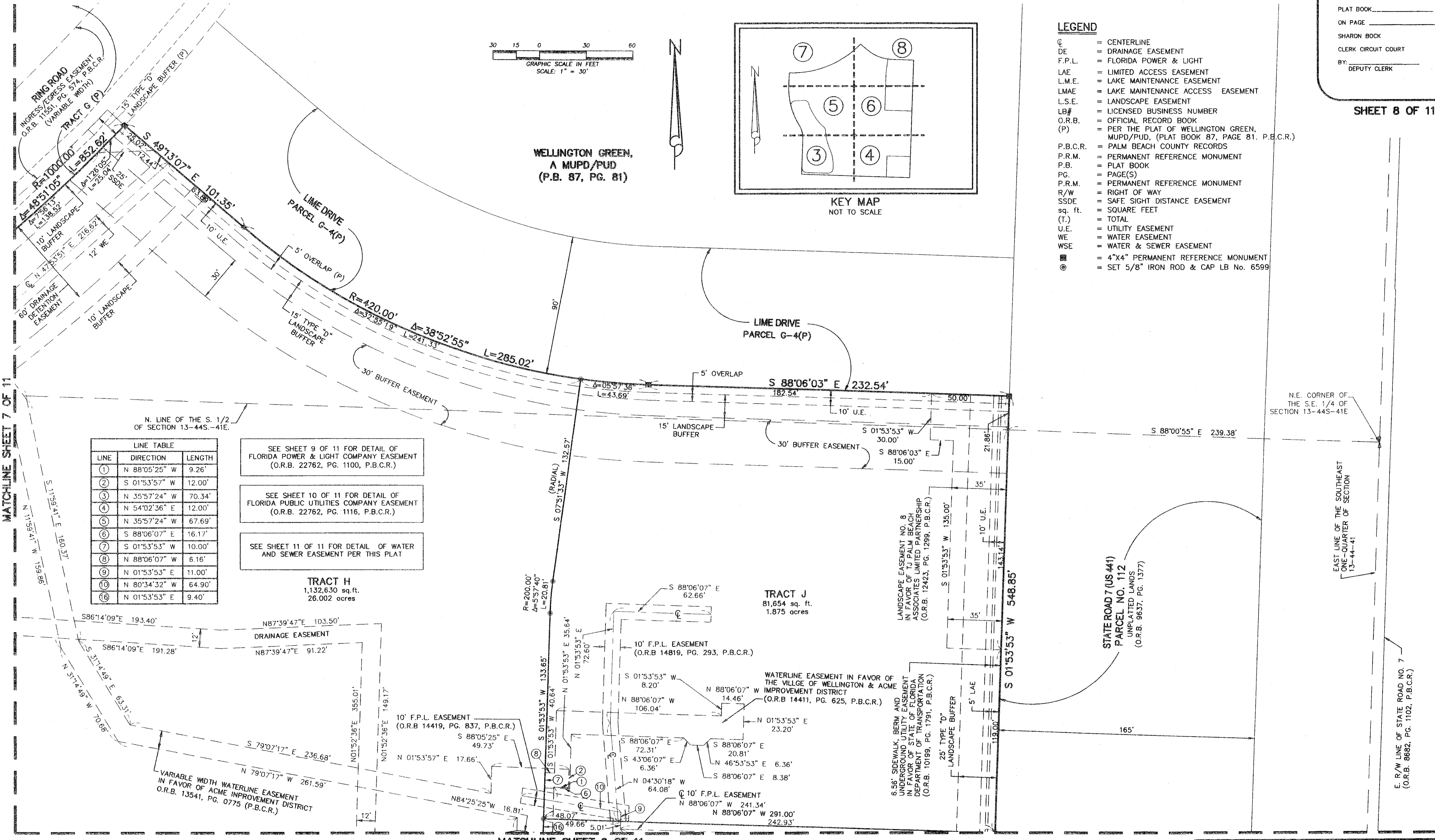


# WELLINGTON GREEN, A MUPD/PUD, RE-PLAT NO. 1

BEING A RE-PLAT OF TRACT F, TRACT W-7 AND WATER MANAGEMENT TRACT D OF THE PLAT OF WELLINGTON GREEN, A MUPD/PUD AS RECORDED IN PLAT BOOK 87, PAGES 81 THROUGH 90 OF THE PUBLIC RECORDS OF PALM BEACH COUNTY, FLORIDA  
SECTION 13, TOWNSHIP 44 SOUTH, RANGE 41 EAST, VILLAGE OF WELLINGTON, PALM BEACH COUNTY, FLORIDA  
JUNE 2008

STATE OF FLORIDA  
COUNTY OF PALM BEACH } S.S.  
**183**  
THIS INSTRUMENT WAS FILED FOR  
RECORD AT \_\_\_\_\_ M.  
THIS \_\_\_\_\_  
DAY OF \_\_\_\_\_ 20\_\_\_\_  
AND DULY RECORDED IN:  
PLAT BOOK \_\_\_\_\_  
ON PAGE \_\_\_\_\_  
SHARON BOCK  
CLERK CIRCUIT COURT  
BY: \_\_\_\_\_  
DEPUTY CLERK

SHEET 8 OF 11



MATCHLINE SHEET 7 OF 11

LINE	DIRECTION	LENGTH
1	N 88°05'25" W	9.26'
2	S 01°53'57" W	12.00'
3	N 35°57'24" W	70.34'
4	N 54°02'36" E	12.00'
5	N 35°57'24" W	67.69'
6	S 88°06'07" E	16.17'
7	S 01°53'53" W	10.00'
8	N 88°06'07" W	6.16'
9	N 01°53'53" E	11.00'
10	N 80°34'32" W	64.90'
11	N 01°53'53" E	9.40'

SEE SHEET 9 OF 11 FOR DETAIL OF FLORIDA POWER & LIGHT COMPANY EASEMENT (O.R.B. 22762, PG. 1100, P.B.C.R.)

SEE SHEET 10 OF 11 FOR DETAIL OF FLORIDA PUBLIC UTILITIES COMPANY EASEMENT (O.R.B. 22762, PG. 1116, P.B.C.R.)

SEE SHEET 11 OF 11 FOR DETAIL OF WATER AND SEWER EASEMENT PER THIS PLAT

**TRACT H**  
1,132,630 sq. ft.  
26.002 acres

**TRACT J**  
81,654 sq. ft.  
1.875 acres

**DENNIS J. LEAVY & ASSOCIATES, INC.**  
**LAND SURVEYORS AND MAPPERS**

THIS INSTRUMENT WAS PREPARED BY:  
DAVID A. BOWER, P.S.M. #5888 IN THE OFFICES  
OF DENNIS J. LEAVY AND ASSOCIATES, INC., LB #6599  
460 BUSINESS PARK WAY, SUITE D  
ROYAL PALM BEACH, FLORIDA 33411  
(561) 753-0650

460 BUSINESS PARK WAY • SUITE D • ROYAL PALM BEACH, FL • 33411  
PHONE: (561) 753-0650 FAX: (561) 753-0290

SCALE: 1"=30' CHECKED BY: D.B. DATE: 2/20/2007  
DRAWN BY: E.B. JOB NO.: 06-023